



# Capabilities Statement

Julie Ogilvie  
President  
510.364.7285

info@artemis-environmental.com  
www.artemis-environmental.com

## Core Competencies

Artemis Environmental Services, Inc. (Artemis Environmental) is a woman-owned consulting firm located in San Diego County focused on providing strategic leadership in regulatory permitting and environmental planning related to biological and natural resources throughout the southwest since 2016. We support environmental planning, permitting, compliance, and restoration projects for utilities, private clients, public agencies, and the military. Artemis Environmental's in-house staff and more than thirty variable part-time natural resources experts have the skills that complement each other to provide a full suite of services from project design through post-construction as identified in the table below. We also provide general project services, including project management, scheduling, GIS modeling and analysis, database development, data management, and web-based data collection tools.



Planning & Design	Biological Resources Expertise	Environmental Review & Permitting	Pre-Construction, Construction, and Post-Construction Implementation
Habitat Assessments and Inventory Surveys	Arroyo toad (H)	Waters and Wetlands Permit Applications (USACE, RWQCB, SWRCB, CDFW, CCC)	Habitat Mitigation and Monitoring Plans
Vegetation Classification and Mapping	Blunt-nosed leopard lizard (P)	State and Federal Endangered Species Act Consultations (USFWS, NMFS, CDFW)	Resource Specific Mitigation and Monitoring Plans
Aquatic Habitat Assessments and Surveys	Burrowing owl (E)	Other Agency Coordination (CCC, CPUC, CEC, BLM, USBR, State Lands, and USFS)	Worker Environmental Awareness Program Development
Protocol or Focused Biological / Botanical Surveys	California gnatcatcher (P)	CEQA/NEPA Sections	Pre-construction/Construction Surveys/Monitoring for Biological Resources
Natural Resources Technical Studies / Reports	Certified CRAM Practitioner (P)	Alternatives Analysis	Environmentally Sensitive Area Fencing and Flagging
Due Diligence, Opportunities, and Constraints Analysis	Coachella Valley fringe-toed lizard (P)	Mitigation and Monitoring Plans	Agency Coordination
Jurisdictional Waters and Wetland Delineations	Desert bighorn sheep (E)	Natural Environment Studies	Environmental Compliance Monitoring and Reporting
Regulatory Permitting Strategic Planning	Desert tortoise (H)	Section 4(f) Evaluations	SWPPP Compliance
	Flat-tailed horned lizard (H)		
	Invasive/Noxious weeds (E)		
	Least Bell's vireo (P)		
	Quino checkerspot butterfly (P)		
	Raptors, riparian, & nesting birds (E)		
	Small mammals (P)		
	Southwestern willow flycatcher (P)		
	Special-status bats (E)		
	Special-status plants and cacti (P)		
	Vegetation mapping (E)		
	Vernal pool branchiopods (P)		

## Certifications

CADGS OSDS, SBE (micro) #2002010  
CPUC, WBE #16000256  
CUCP, DBE #43648  
City of San Diego, SLBE #17AE1506  
U.S. SBA, WOSB

## NAICS

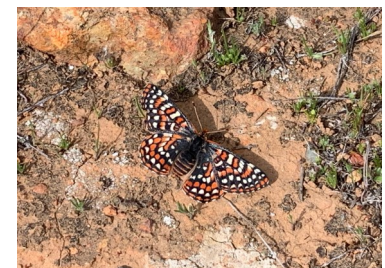
541690, 541620, 541320, 541370, 541330, 541310

## DUNS

080254668

## CAGE Code

7PBX0



P = Permitted  
H = Handler  
E = Expertise



Julie Ogilvie  
President  
510.364.7285

[info@artemis-environmental.com](mailto:info@artemis-environmental.com)  
[www.artemis-environmental.com](http://www.artemis-environmental.com)

## Key Personnel

**Julie Ogilvie, MS, JD—President and Regulatory Project Manager:** As a California-licensed attorney with a Master’s in Ecology and a knack for finance, she is uniquely suited to aid clients on a wide range of matters. Throughout her career, she has provided regulatory permitting and compliance support to diverse clients and industries, including energy, utilities, transportation, water, public/private development, and the military.

**Stephanie Lohstroh—Senior Environmental Analyst and Stormwater Specialist:** Has more than 20 years of experience as a project manager working in both the public and private sector on a wide range of projects, focusing on stormwater regulatory compliance. Qualified Storm Water Pollution Prevention Plan Developer and skilled in preparing project specific plans, conducting audits, site inspections and ensuring client compliance with the Construction General Permit. Provides project controls and contract support for multiple large on-call utility and transportation contracts.

**Jasmine Bakker—Senior Biologist:** Has more than 15 years of experience as a project manager and biologist for a variety of biological surveys, habitat restoration, and environmental compliance projects to support renewable energy, utilities, water infrastructure, and private/public development. Experience performing aquatic resource delineations and CRAM analyses, preparing Habitat Monitoring and Mitigation Plans, and specializes in botanical surveys and vegetation mapping in California.

**Tara Baxter—Senior Biologist:** Has more than 10 years of experience as a project manager and biologist conducting wildlife and floral surveys, native habitat restoration and mitigation monitoring, construction compliance monitoring, and environmental document preparation. Experience in managing large utility projects; specializes in birds, including surveys for coastal California gnatcatcher, least Bell's vireo, southwestern-willow flycatcher, brown-headed cowbird, burrowing owl, raptor migration, avian point count, general nesting bird, and bird banding.

## Key Teaming Partners

**Justin Palmer—Senior GIS Specialist:** Has more than 20 years of project experience managing and developing data, maps, and graphics that accurately reflect needs of the individual project. Develops mobile data collection solutions that sync real-time to databases for immediate processing and reporting.

**Ed Kentner, PhD—Senior Botanist and Wetland Specialist:** Has more than 25 years of experience specializing in the flora and vegetation communities of California. Experience in vascular plant taxonomy, vegetation classification and mapping, and conducting wetland delineations. Skilled in environmental document production and data management.

**Bill Graham—Senior Environmental Planner:** Has more than 35 years of experience preparing environmental documentation under State and Federal regulations in both the public and private sector. Experienced in preparing NEPA and CEQA documents, as well as overseeing the ancillary permit approvals needed for project implementation.

**Chloe Scott—Technical Editor:** Has more than 17 years of experience in the environmental compliance field. As a technical editor, provides editing, proofreading, and peer review to a variety of products, from large environmental studies covering a range of disciplines to white papers, presentations, and environmental education materials.

Additional Wildlife Biologists, Botanists, and Wetland Specialists available.





Julie Ogilvie

President

510.364.7285

[info@artemis-environmental.com](mailto:info@artemis-environmental.com)

[www.artemis-environmental.com](http://www.artemis-environmental.com)

## Differentiators

Our mission is to help our clients achieve their goals from project concept to completion with personal, cost-effective service. Our approach to every project is to provide:

- \* **Premier service at an affordable price.** We hire highly experienced, senior experts who have the capability to integrate with teams quickly, allowing us to provide quality service with low costs.
- \* **Personal Advantage.** We are dedicated to providing our clients with personal, agile service that responds quickly to changing regulatory conditions. Our small size, yet broad network of experts, allows us to operate as if we were a larger firm with resources available to strategize and develop peer-reviewed solutions to project needs.
- \* **Technical Excellence.** Our services don't just start and end in the field. We produce high-quality technical reports, studies, and environmental documents. Our experts hold the highest degrees in their profession, such as Juris Doctorates and Doctorates in Philosophy, and maintain professional licenses and permits for their respective fields.

## Representative Projects and Clients

### Utility Projects

- \* Lugo-Victorville 500-kV Transmission Line Remedial Action Scheme Project (2021), Rincon (SCE): Regulatory Permitting, Aquatic Resource Delineation, Rare Plant Surveys, Succulent Surveys, Noxious Weed Surveys, Reporting
- \* City of Mesquite Approach Pipeline Project (2021), Gothic Landscape (Southwest Gas Corporation): Restoration Monitoring, Yucca and Cacti Surveys, Noxious Weed Mapping
- \* PSEP Line 235E and Line 235W Phase 2 Hydrotest Project, (2020-2021), AECOM (SoCalGas): Aquatic Resource Delineation, Rare Plant Surveys, Habitat Assessment Surveys, Reporting
- \* Eagle Mountain-Blythe 161-kV Project (2018-2020), Jacobs (SCE): Aquatic Resource Delineation and Permitting
- \* Valley-Ivyglen Transmission Line Project (2018-2020), Environmental Intelligence (SCE): Aquatic Resource Delineation, Permitting, Invasive Plant Surveys and Management Plan, Nesting Bird Management Plan

### Transportation Projects

- \* High Speed Rail Central Valley-Wye and Ranch Road to Merced Section Project (2018), PlaceWorks (High Speed Rail Authority): Regulatory Permitting
- \* Bayshore Bikeway Segments 4B and 5 Project (2017), MTM Builders, Inc (SANDAG): Environmental Compliance Monitoring and Reporting
- \* State Route 91 Corridor Operations Project (2020-2021), OHL (Caltrans/Riverside County Transportation Commission): Environmental Compliance and Reporting,
- \* State Route 111 Bridge Construction Project (2018), J. McLoughlin Engineering Co. (Caltrans): Coachella Valley Fringe-Toed Lizard Surveys and Compliance Monitoring

### Military Projects

- \* Vandenberg Air Force Base Space Launch Complex-2 Project (2020), Potomac-Hudson Engineering, Inc. : Habitat Assessment and Vegetation Mapping
- \* MCAS Miramar National Cemetery Phase II Expansion Project (2019), John Gallup & Associates, LLC and Potomac-Hudson Engineering, Inc. : Biological Resources Technical Report, Resources Avoidance Report, Habitat and Aquatic Resource Assessments
- \* Naval Base Point Loma Housing Project (2018), Potomac-Hudson Engineering, Inc. : Nesting Bird Surveys and Monitoring
- \* NASA Ames Research Center (2019), Potomac-Hudson Engineering, Inc. : Focused Burrowing Owl and Bat Surveys

### Landfill Projects

- \* El Sobrante Landfill Project (2019-2021), USA Waste of California: Regulatory Permitting, Aquatic Resource Delineations, Biological Resource Assessments, Reporting
- \* McKittrick Waste Treatment Site Channel Realignment Project (2021), Waste Management: Regulatory Permitting, Aquatic Resource Delineations, Biological Resource Assessments, Reporting

### Fire Management Projects

- \* Wildfire Fuel Management Project (2020), AECOM (SDG&E): Biological and Vegetation Management, Rare Plant Surveys
- \* Live Fuel Study (2019-2021), AECOM (SCE): Vegetation Sampling and Lab Analysis